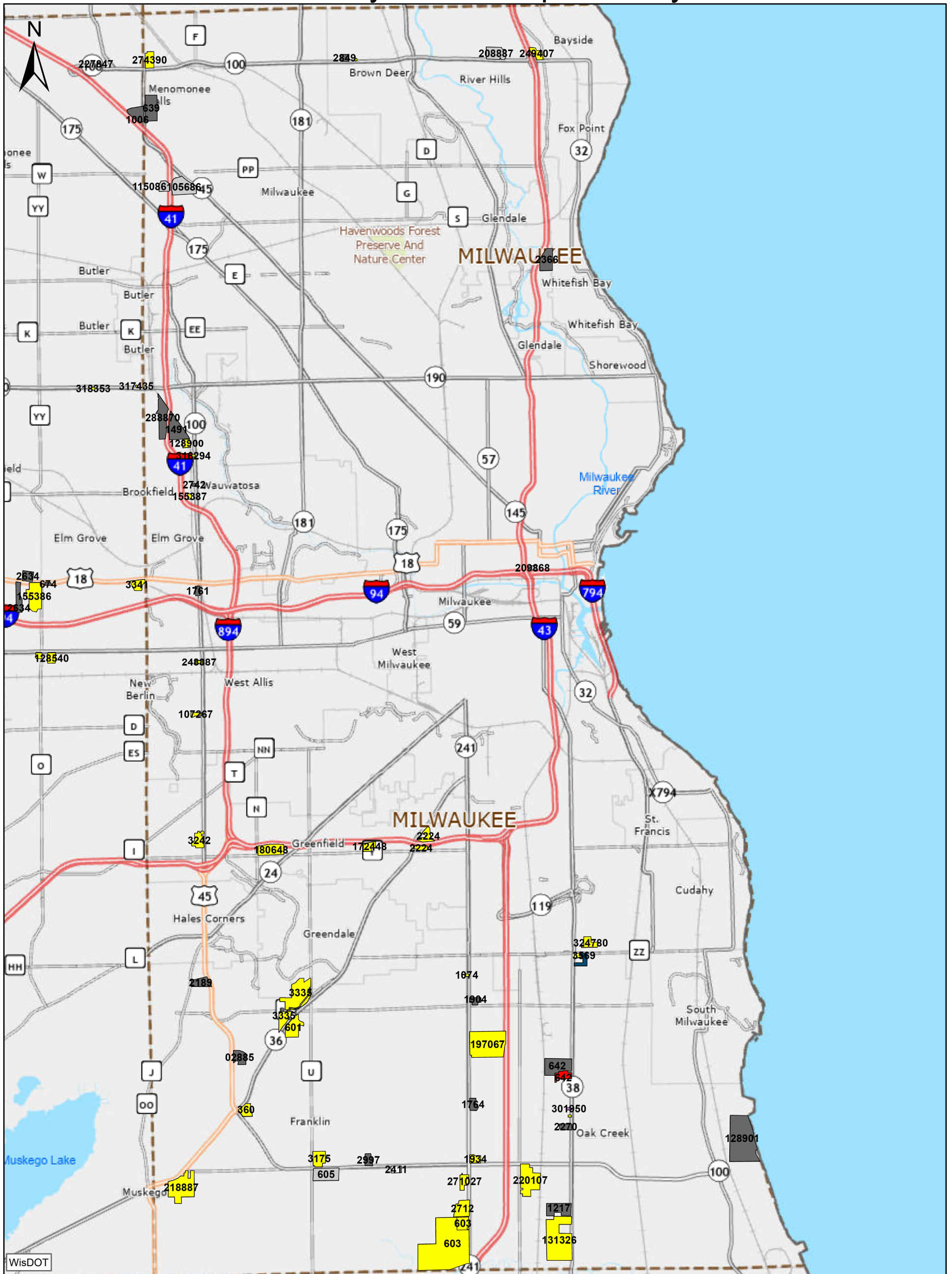
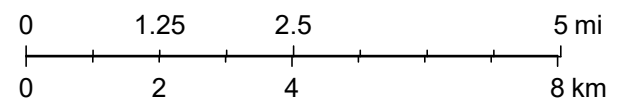


Milwaukee County - Traffic Impact Analysis Status



Generated on 04/01/2024



Traffic Impact Analysis (Status Change Date - 01/01/2024)

- No TIA Submitted (TIA Required)
- TIA Review Complete
- Potential TIA/Waiting for IR
- TIA Under Review
- Road Improvements Complete
- No TIA Submitted (TIA Not Required)
- Inactive

Disclaimer for TIA Maps:

This map displays the developments occurring on state-maintained highways that are known to the Wisconsin Department of Transportation (WisDOT). It does not include all developments on connecting highways, county highways or local roads. Please contact the appropriate entity to obtain information on any developments taking place on connecting highways, county highways or local roads.

This map may not contain all developments occurring adjacent to state-maintained highways. Developments that are small, in the early planning stages or unknown to WisDOT may not be displayed. Additional developments may have occurred since the publication of this map. Please contact the Southeast Region office at (262) 548-5902 or ser.tdsd@dot.wi.gov to confirm the status of the developments shown, obtain more information about the mapped developments, and/or inform WisDOT of any additional developments.

All historical TIAs may not be shown. WisDOT's effort to upload historical TIAs is ongoing.